

UNIVERSITY OF SAN FRANCISCO

SUSTAINABILITY DESIGN CHALLENGE 2022

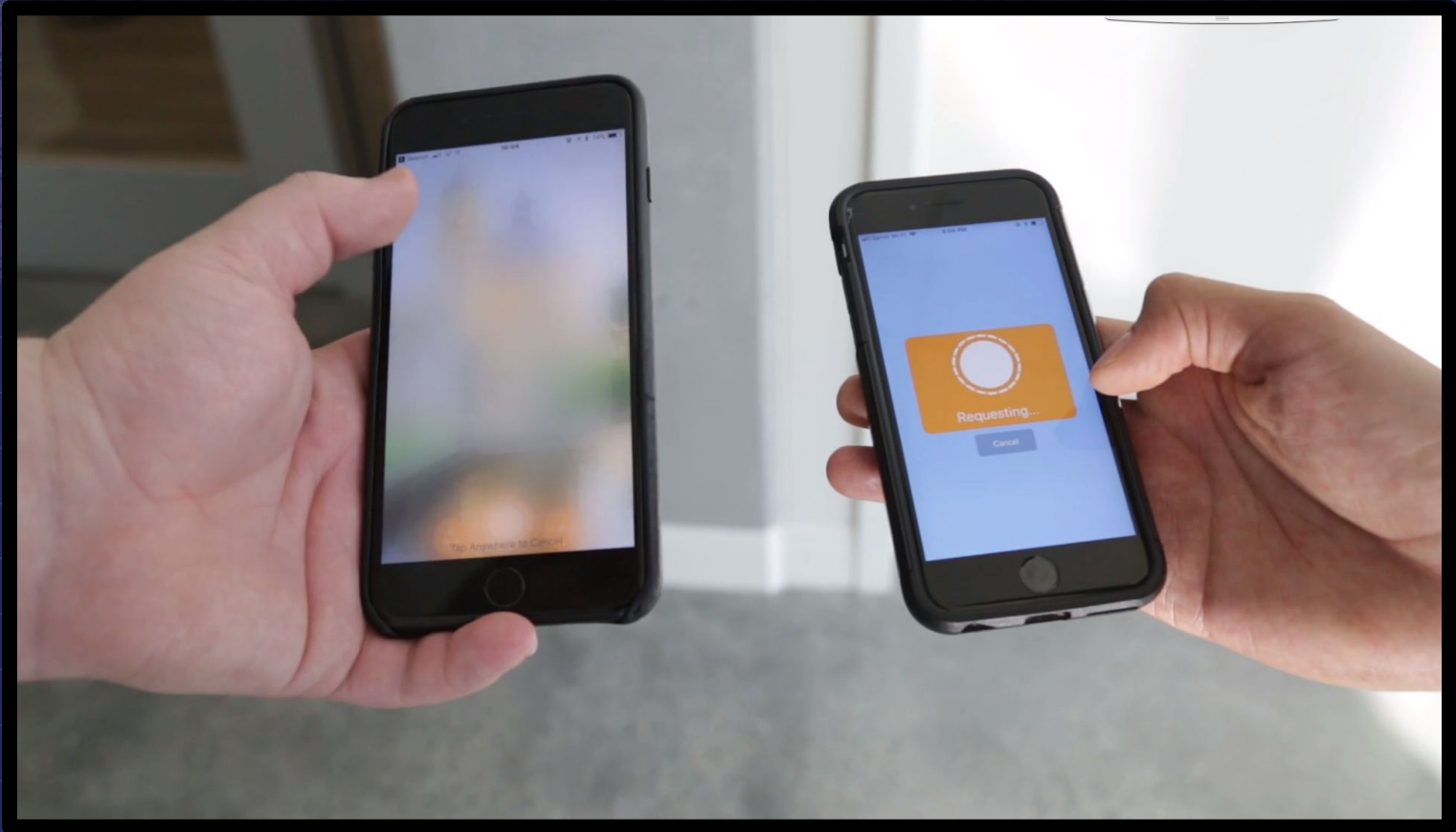


ENVIRONMENTAL ENGINEERING & SCIENCE CLUB

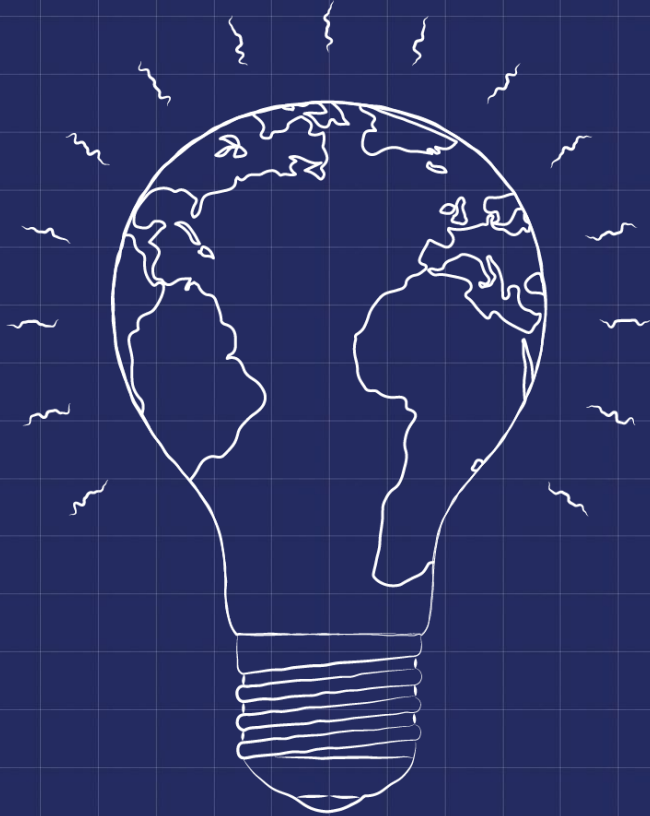


@EESCLUBUSFCA

WHAT IS SUSTAINABILITY DESIGN CHALLENGE?



SUSTAINABILITY: ENSURING ENOUGH FOR ALL FOREVER...



...by affecting:

- ☐ Awareness
- ☐ Behavior change
- ☐ Policies & procedures
- ☐ Product design

...in these areas of focus:

- ❖ Energy conservation & efficiency
- ❖ Water conservation & efficiency
- ❖ Waste reduction & diversion
- ❖ Transportation to/from campus
- ❖ Other (consumer choice, food choice, etc)



WHAT IS A DESIGN CHALLENGE?


You identify a problem, and you work in a team to find a solution.

WHAT'S THE GOAL?

To propose a solution that will help improve and promote environmental sustainability at USF. Your solution should be in the form of a concept proposal and development plan that addresses one of the priority areas identified.

WHAT KIND OF SOLUTION?

The format is up to your team. Maybe it's a physical object, a smartphone app, a process modification, or an educational campaign. There's no limit to the form your solution can take!





WHO'S ON A TEAM?


USF students from any major or year. Teams will be multidisciplinary, representing at least three of the following skill sets: research, making, writing, and graphics.

HOW ARE PROPOSALS JUDGED?

Your team's proposal will be judged on its feasibility, impact, and creativity by a panel of expert judges with backgrounds in sustainability, design, and social impact.

ARE THERE PRIZES?

Yes! Each member of the top three teams will receive a USF bookstore gift card. Also, the winning team will meet with USF President Fr. Paul Fitzgerald to pitch their idea for possible implementation on campus. You can help make a lasting difference at USF!



MORE ON JUDGING CRITERIA



Feasibility – Is your proposed solution realistic in scope and scale? Does the background research and development proposal make sense? Is the solution itself sustainable?

Impact – Would the proposed solution affect behaviors and have real environmental or social impact at USF and beyond? Can it inspire people to care?

Creativity – Is your proposed solution a fresh take on the problem? Does it tackle a problem in a creative and engaging way?



MORE ON TEAMS

Interdisciplinary team composition is preferred, and teams of 3-5 team members are acceptable.

Proposals with members with at least three of the following skill sets will have priority:



MAKING (red): do you know how to code? or prototype with simple materials?



GRAPHICS (yellow): are you good at making presentation materials communicate well?



WRITING (blue): are you expressive with your words and good at pitching ideas?



RESEARCH (green): do you like finding background info to support your ideas?

CALENDAR OF EVENTS AND DEADLINES

Kickoff Event (today, September 20)

- Meet potential team members, share ideas, form teams

Team applications due by **Friday, September 23 by 11:59 PM**

- Register at tinyurl.com/SDC22signup



Team proposals due by **Friday, September 30 by 11:59 PM**

- Submit a general statement of your team's proposal. Proposal form link will be sent to registered groups.
- Teams submitting accepted proposals will be notified on Monday, October 3.

Challenge Day – Main Event: **Saturday, October 8**



Submit your PROPOSAL (Google form due
Friday, September 30, 11:59 PM), containing:

- **Team members** – member names, emails, majors, and main contact person
- **Summary** – executive summary of your idea, 1-2 paragraphs describing your idea for improving campus sustainability (i.e., statement of need, description of idea, desired outcomes)
- **Resources** – list of references and resources, if any, used to construct your idea



Sign up your team by Friday, September 23!
tinyurl.com/SDC22signup



CHALLENGE DAY – MAIN EVENT

SATURDAY, OCTOBER 8, INNOVATION HIVE

9:00 AM

Breakfast & optional workshops:

- Make It or Break It
- Secrets of Successful Apps

10:00 AM

Welcome & overview

- Ground rules & judging criteria
- Presentation guidelines

1:00 PM

Working lunch & feedback from mentors

4:00 PM

Team presentations

5:30 PM

Dinner & judging deliberations

6:30 PM

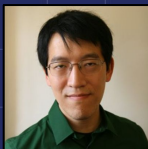
Announcement of winning teams

Sign up your team by Friday, September 23!

tinyurl.com/SDC22signup



RESOURCES



Richard Hsu

Sustainability Coordinator

rhsu4@usfca.edu



Sean Olson

Director of Innovation Hive

solson3@usfca.edu



Penny Scott

Reference Librarian, Gleeson Library

plscott@usfca.edu



...and others such as faculty/alumni
mentors in design, entrepreneurship,
environmental science, psychology, etc

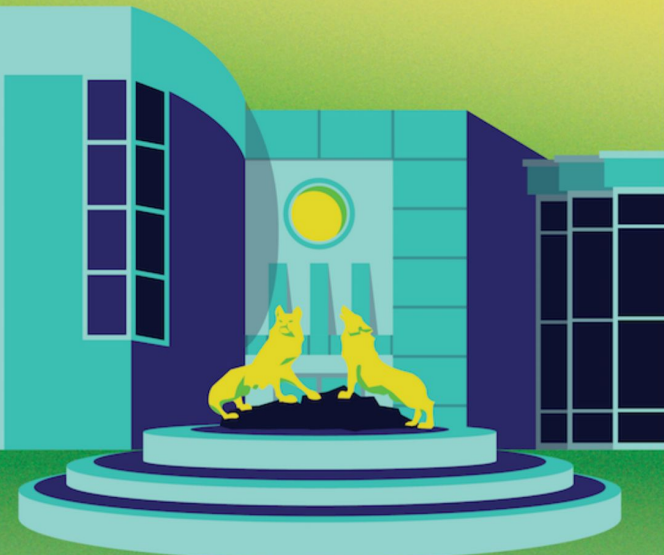
Sign up your team by Friday, September 23!

tinyurl.com/SDC22signup

LIBRARY.USFCA.EDU/HOME

GLEESON LIBRARY/ GESCHKE CENTER

EXPLORE • REFLECT • CREATE
COLLABORATE • GROW



RESEARCH HELP • STUDY ROOMS • COMPUTER
LABS • ZINES & GAMES • SEED LIBRARY

@GLEESONLIBRARY

GLEESONGLEANINGS.WORDPRESS.COM

FACEBOOK.COM/GLEESONLIBRARY

STRENGTHEN YOUR SUSTAINABILITY DESIGN PITCH WITH RESEARCH!

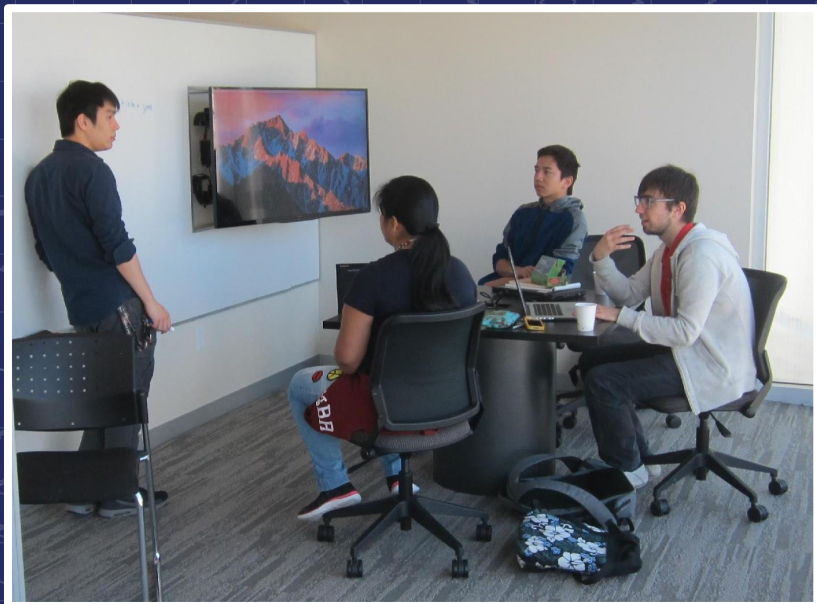
Sustainability Design Challenge
Library Research Guide:
library.usfca.edu/sdchallenge

To get help from the library on your
project, visit: libanswers.usfca.edu

GOOD LUCK TO ALL OF THIS YEAR'S TEAMS!

Sign up your team by Friday, September 23!
tinyurl.com/SDC22signup

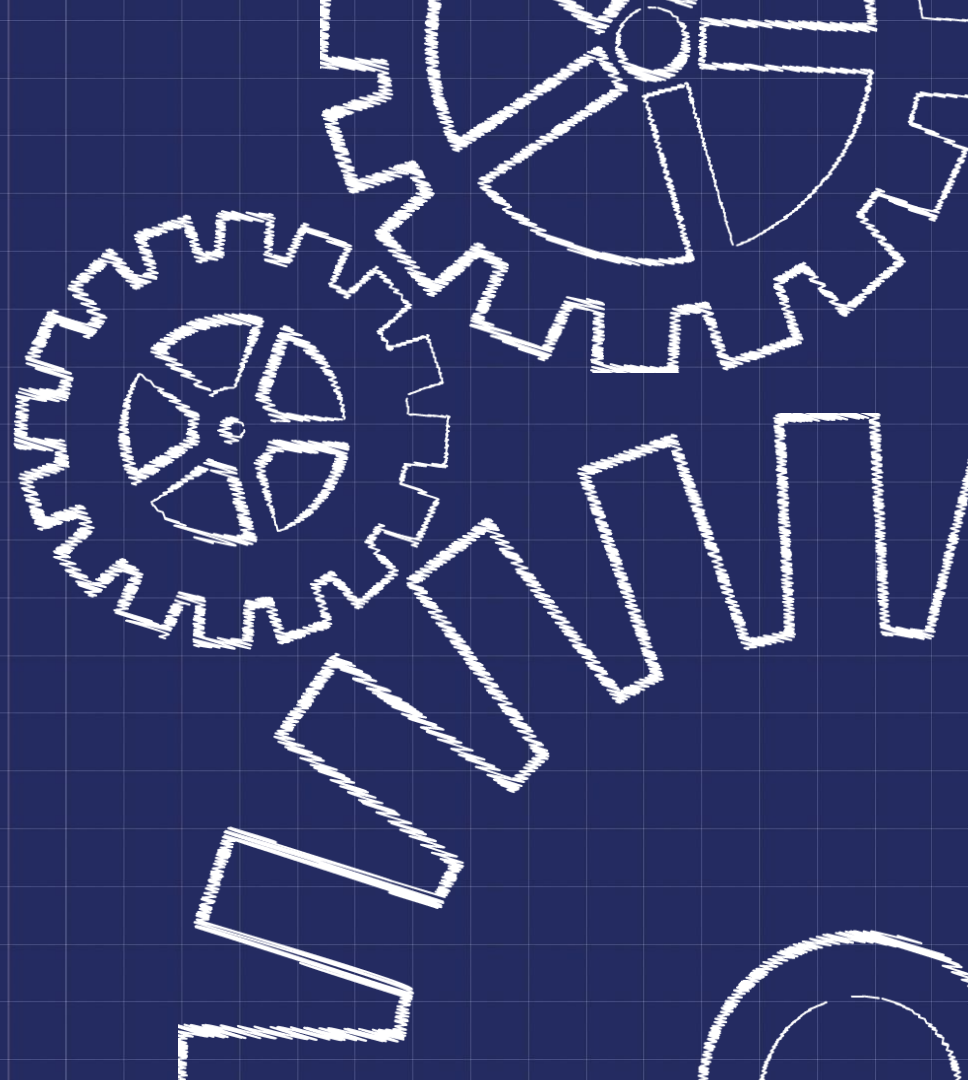
USER-CENTERED DESIGN



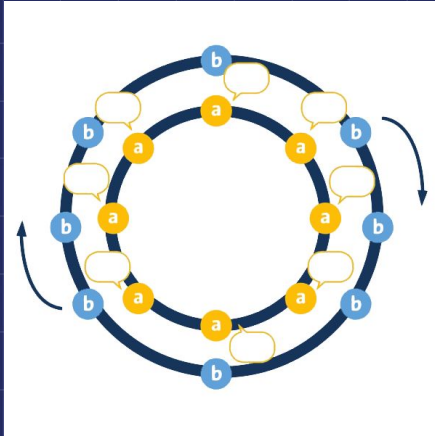
Sign up your team by Friday, September 23!
tinyurl.com/SDC22signup

Q & A

Sign up your team by Friday, September 23!
tinyurl.com/SDC22signup



AND NOW TO MEET EACH OTHER AND START FORMING TEAMS!



Step 1. Form two concentric circles facing each other

Step 2. Introduce yourself and share your ideas (inside circle first)

Step 3. Rotate your circle when instructed to do so

Step 4. Repeat Step 2!

At the end of the activity when you begin to form teams, look for skill sets (dots) that your team lacks. **Exchange contact information with your team members!**

Sign up your team by Sept. 23!
tinyurl.com/SDC22signup



USF SUSTAINABILITY DESIGN CHALLENGE 2022

...is brought to you by the 2022 Planning Committee (and supporting units)

Aiden Dawn (Environmental Engineering & Science Club)

Kate Farber (Environmental Engineering & Science Club)

Richard Hsu (Office of Sustainability)

Amalia Kokkinaki (Environmental Science)

Lou Lucaccini (Entrepreneurship, SOM)

Hana Mori (Engineering)

Sean Olson (Innovation Hive)

Dave Wolber (Computer Science)

...with special thanks to USF President Fr. Paul Fitzgerald, School of Management, College of Arts & Sciences, Art+Architecture, Computer Science, Educational Technology Services, Engineering, Facilities Management, Innovation Hive, Thatcher Gallery, Gleeson Library, School of Nursing & Health Professions, Environmental Management, Environmental Science, Environmental Studies, Environmental Engineering & Science Club, and the many students, staff, and faculty members who helped promote this event!

Sign up your team by Friday, September 23!

tinyurl.com/SDC22signup

GOOD LUCK!

Remember to exchange contact information within your team!

DEADLINES:

Submit team applications by
Friday, September 23

Submit idea proposals by
Friday, September 30



Sign up your team by Friday, September 23!
tinyurl.com/SDC22signup